

DOMOPARK

ELECTROMECHANICAL PARKING SAVER

Automatic parking saver with inbuilt control unit. Ideal to preserve your own parking space against un authorized use.

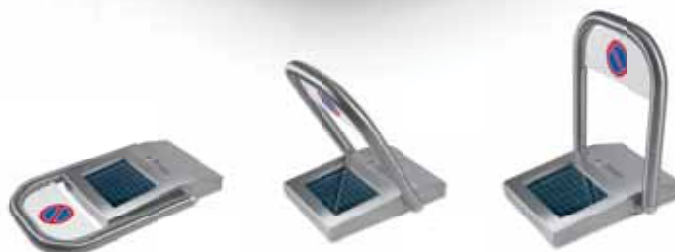
The stainless steel structure makes it virtually indestructible. In case the curved arm is hit by a vehicle, the spring system inside prevents damage and brings the arm back into position.

Safe and precise thanks to the encoder control, it is also simple and easy to install. After fixing it to the ground it does not require any setting. The control unit is pre-programmed.

Practical, it can be installed anywhere. The in-built photovoltaic panel makes it suitable for use in any condition.



NOIRE 2E



DOMOPARK E

Automatic parking saver with inbuilt solar panel. It is completely independent from the mains power supply. Works up to 4 months in total absence of light.

DOMOPARK 230E

Automatic parking saver with battery and transformer for 230 V mains power supply. Works up to 4 months in total absence of power supply.

TECHNICAL SPECIFICATIONS

| | DOMOPARKE | DOMOPARK 230E |
|--------------------|-----------|---------------|
| Motor power supply | 12 V | 12 V |
| Max. motor current | 3 A | 3 A |
| Motor power | 40 W | 40 W |
| Opening time | 8 sec | 8 sec |
| Encoder | YES | YES |
| Grease lubricant | TS10 | TS10 |

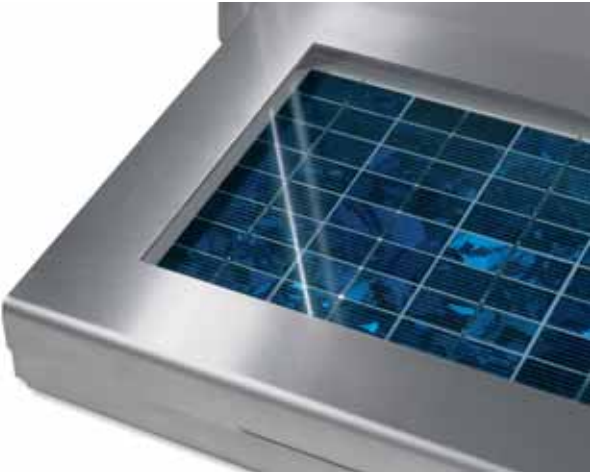
TECHNICAL SPECIFICATIONS BUILT IN CONTROL UNIT

| | D112 | D112 |
|--------------|------|------|
| Model | D112 | D112 |
| Power supply | 12 V | 12 V |
| Max. current | 3 A | 3 A |

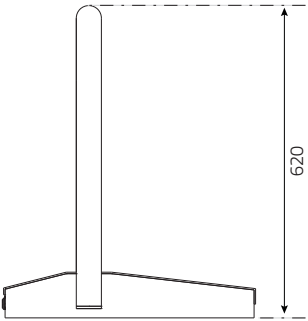
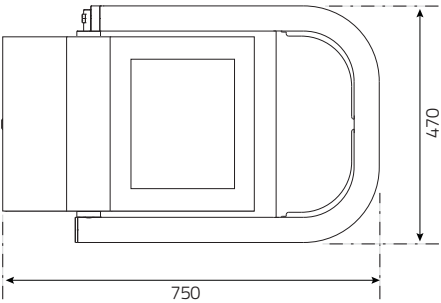
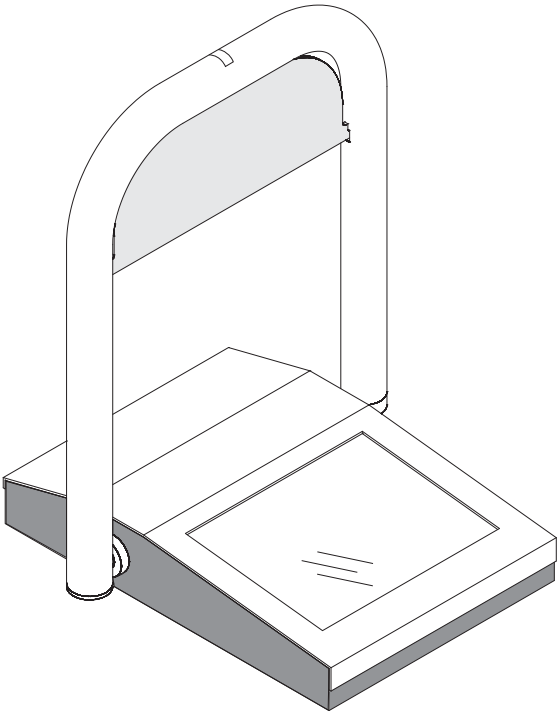
GENERAL DATA

| | D112 | D112 |
|--------------------------|------------|------------|
| Photovoltaic panel power | 5 W | - |
| Battery charger to 230 V | NO | included |
| Working temperature | -20 +55 °C | -20 +55 °C |
| Protection level | IP 54 | IP 54 |
| Weight | 19 Kg | 18,5 Kg |
| Pallet | 12 pcs | 12 pcs |

DOMOPARK



DIMENSIONS



Dimensions in mm

AUTOMATIC BARRIERS